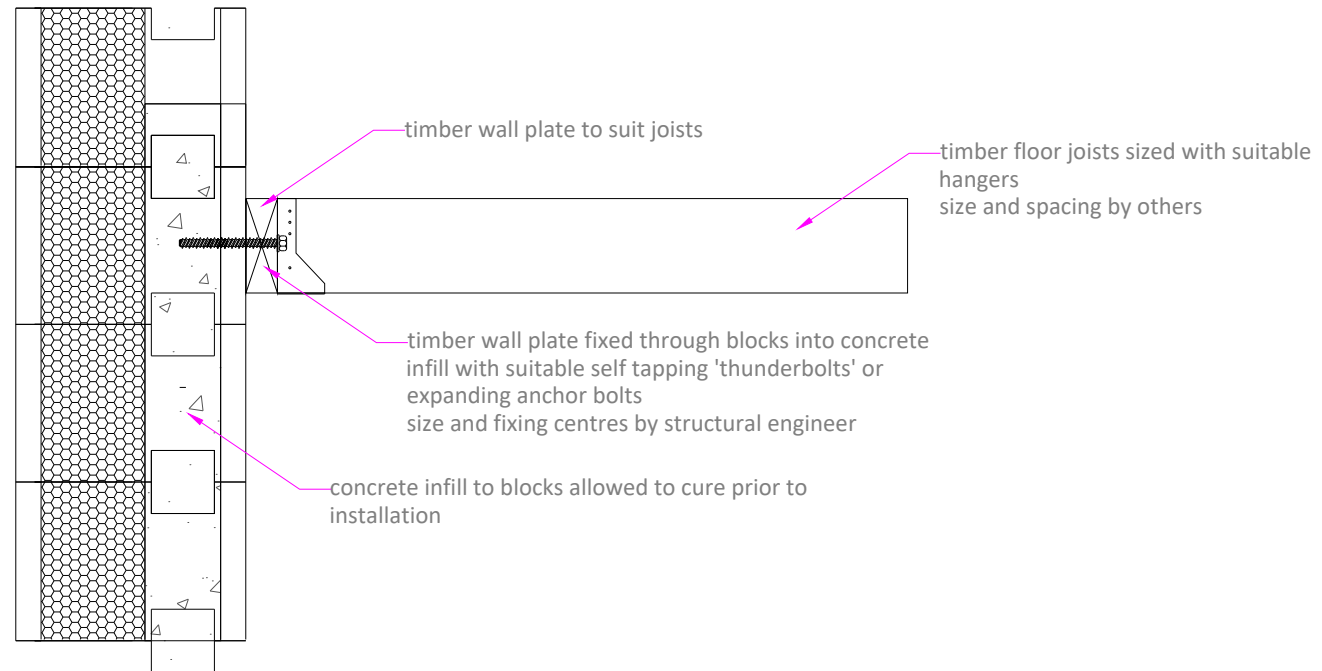


# TIMBER WALL PLATE POST INSTALLED DETAIL



Durisol UK Ltd  
Parkway, Pen-y-Fan Industrial Estate,  
Crumlin, Gwent, NP11 3EF United Kingdom

T 01495 249 400  
E [enquiries@durisoluk.com](mailto:enquiries@durisoluk.com)  
[www.durisoluk.com](http://www.durisoluk.com)

## DURISOL TECHNICAL RESOURCES

DRAWING NUMBER: DTS115

REV: 2

NOT TO SCALE

FOR INFORMATION ONLY. ALWAYS USE A STRUCTURAL  
ENGINEER FOR YOUR SPECIFIC PROJECT DETAILS